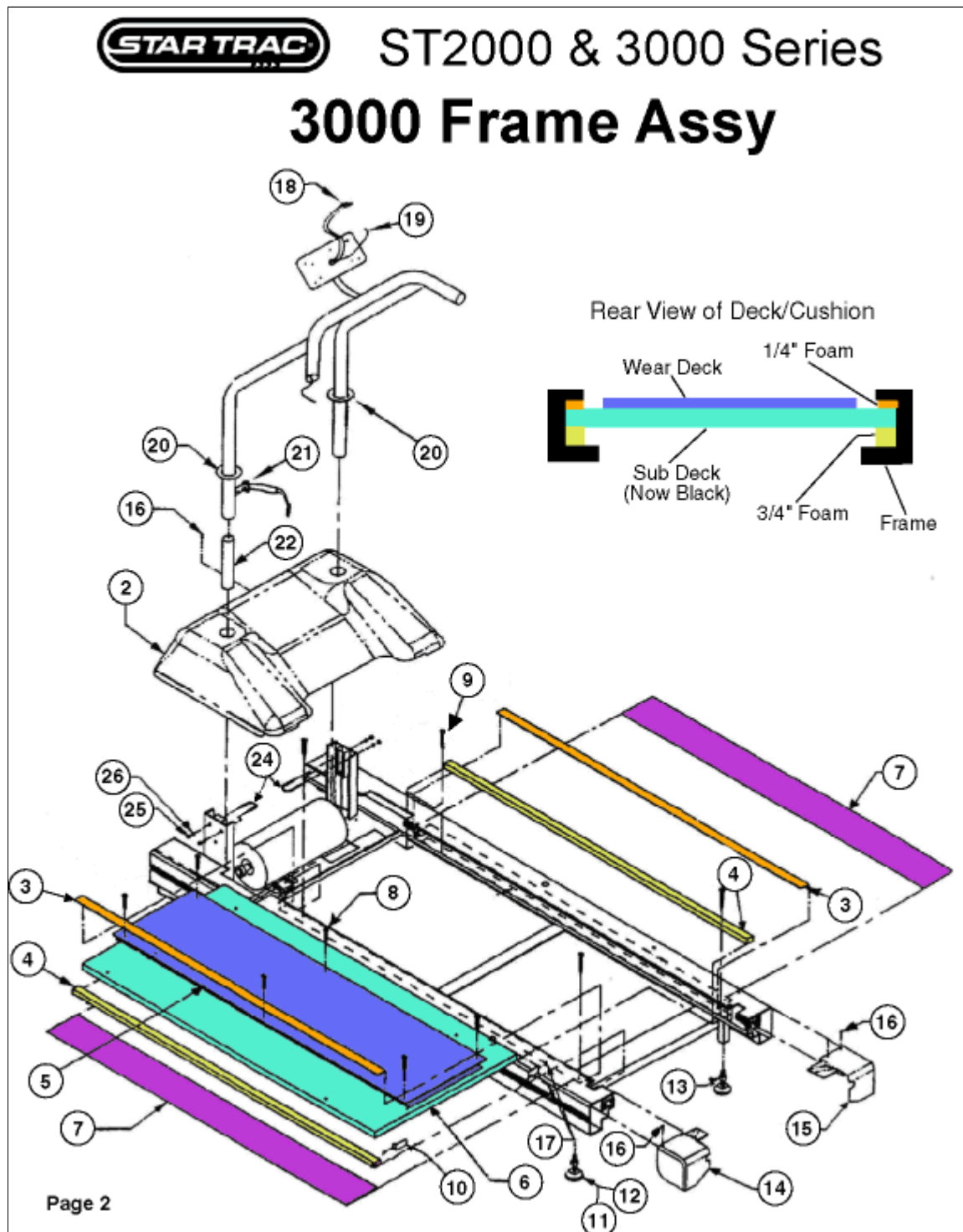


# Frame Assy

## 2000 Frame Assy

Callout	Part Number:	Description
1	<b>020-1441</b>	Shroud, Motor, 2000
3	<b>140-0715</b>	Deck Foam, 1/4", p/ft, top
4	<b>800-3239</b>	Deck Rubber, Enhancement Set
6	<b>800-0590</b>	Deck, dbl-sided
7	<b>050-0410</b>	Tape, No Slip 3"x 60' Per Ft
9	<b>110-3030</b>	Screw, 10Abx2.5"
10	<b>010-1077</b>	Teflon Deck Strips 1"
11	<b>800-3262</b>	Foot, Adj/Level, 3/8" Old Style
12	<b>140-0037</b>	Foot, Adj/Level, 1/2"x2.0"
13	<b>110-1823</b>	Nut, 1/2-13x5/16" Jam
14	<b>800-0004</b>	Finger Guard, Endcap, Lt
15	<b>800-0003</b>	Finger Guard, Endcap, Rt
16	<b>110-0475</b>	Screw, 10-32x1/2" Phcs, Blk Oxd
17	<b>110-0380</b>	Screw, 10-32x3/8"
18	<b>800-0122</b>	Disp Cable (Data)
19	<b>708-0402</b>	Cable Assy, Stop Sw, Extn
20	<b>708-0905</b>	Gasket, Motor Shroud Foam 3"
21	<b>140-0065</b>	Grommet
22	<b>800-3916</b>	Rail Kit, Sleeve, Taped
24	<b>110-1000</b>	U-Bolt, 3/8-16
25	<b>110-1830</b>	Nut, 3/8-16 Hex, nyloc
26	<b>120-0460</b>	Washer, 3/8" Lock



Product ID: 22 • Diagram ID: 63

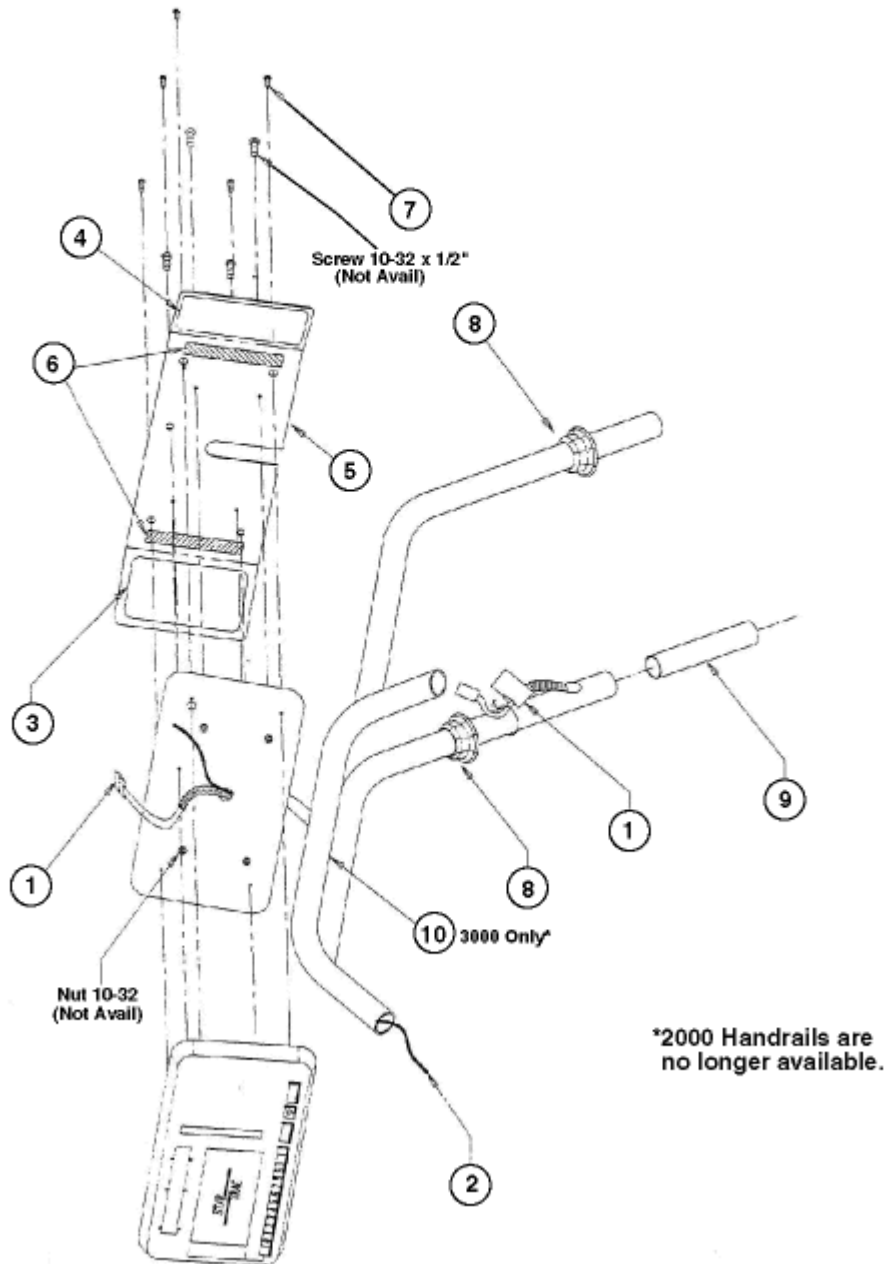
# Frame Assy

## 3000 Frame Assy

Callout	Part Number:	Description
2	<b>020-0896</b>	Shroud, Motor, 3000/4000
3	<b>140-0715</b>	Deck Foam, 1/4", p/ft, top
4	<b>800-3239</b>	Deck Rubber, Enhancement Set
5	<b>800-0592</b>	Deck, Wear Deck
6	<b>050-0180</b>	Deck, Sub (now Black)
7	<b>140-0851</b>	Non-Skid Tape, 4" order per Ft
8	<b>110-2999</b>	Screw, 10-32x1.5"
9	<b>110-3030</b>	Screw, 10Abx2.5"
10	<b>010-1077</b>	Teflon Deck Strips 1"
11	<b>800-3262</b>	Foot, Adj/Level, 3/8" Old Style
12	<b>140-0037</b>	Foot, Adj/Level, 1/2"x2.0"
13	<b>110-1823</b>	Nut, 1/2-13x5/16" Jam
14	<b>800-0004</b>	Finger Guard, Endcap, Lt
15	<b>800-0003</b>	Finger Guard, Endcap, Rt
16	<b>110-0475</b>	Screw, 10-32x1/2" Phcs, Blk Oxd
17	<b>110-0380</b>	Screw, 10-32x3/8"
18	<b>800-0122</b>	Disp Cable (Data)
19	<b>708-0402</b>	Cable Assy, Stop Sw, Extn
20	<b>708-0905</b>	Gasket, Motor Shroud Foam 3"
21	<b>140-0065</b>	Grommet
22	<b>800-3916</b>	Rail Kit, Sleeve, Taped
24	<b>110-1000</b>	U-Bolt, 3/8-16
25	<b>110-1830</b>	Nut, 3/8-16 Hex, nyloc
26	<b>120-0460</b>	Washer, 3/8" Lock



# ST2000 & 3000 Series Display Handrail Assy



Page 7

Product ID: 22 • Diagram ID: 68

# Display Handrail Assy

Callout	Part Number:	Description
1	<b>800-0122</b>	Disp Cable (Data)
2	<b>708-0402</b>	Cable Assy, Stop Sw, Extn
3	<b>050-3305</b>	Label, Instr, Lt
4	<b>050-0321</b>	Label, Instr, Rt
5	<b>020-1360</b>	Instr Panel, No Stickers
6	<b>140-0665</b>	Double Sided Tape
7	<b>110-0130</b>	Screw, 6-32x1/4"
8	<b>708-0905</b>	Gasket, Motor Shroud Foam 3"
9	<b>800-3916</b>	Rail Kit, Sleeve, Taped
10	<b>708-3072</b>	Hrail, Front, w/o St



# ST2000 & 3000 Series Display Assy

## A. Display Panel (Keypad) Aluminum Face - Flat

- ① Programmable
- ② Jogger
- ③ Waller
  - \* Simple with Numbers - Use ⑧ & ⑫
- ⑤ Simple w/no Numbers (No Programs on Panel)

## B. Display Panel (Keypad) Plastic Face - Beveled

- ⑥ Programmable
- ⑦ Waller
- ⑧ Simple w/ Numbers (No Programs on Panel)
  - \* Jogger - Use ② & ⑪
  - \* These panels not avail in plastic.
  - \* Simple w/no Numbers - Use ⑤ & ⑪

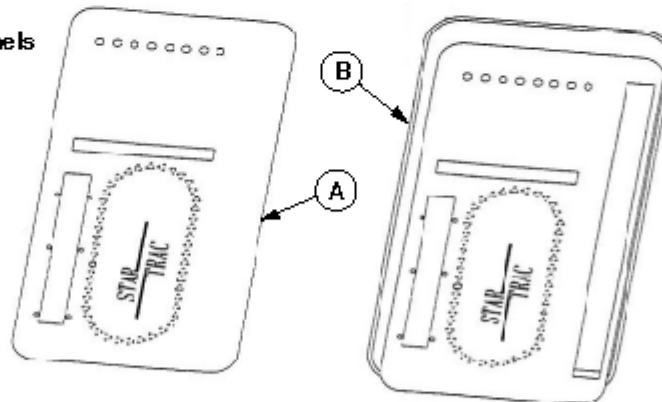
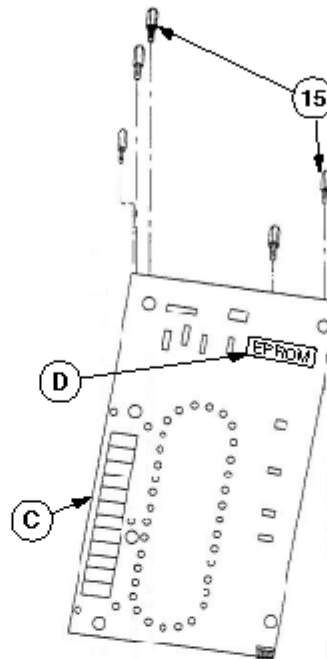
- ⑪ Plastic Tray for Aluminum Panels (Not Shown)
- ⑫ Metal Plate to mount Plastic Panels (Not Shown)

## C. Display Electronic (PCB)

- ⑬ Display Electronic\*
  - \* Comes with an eeprom
  - \* You need to specify the EXACT model or provide the serial number.

## D. Eeprom (Firmware)

- ⑭ Eeprom (Firmware)\*
  - \* You need to specify the EXACT model or provide the serial number.



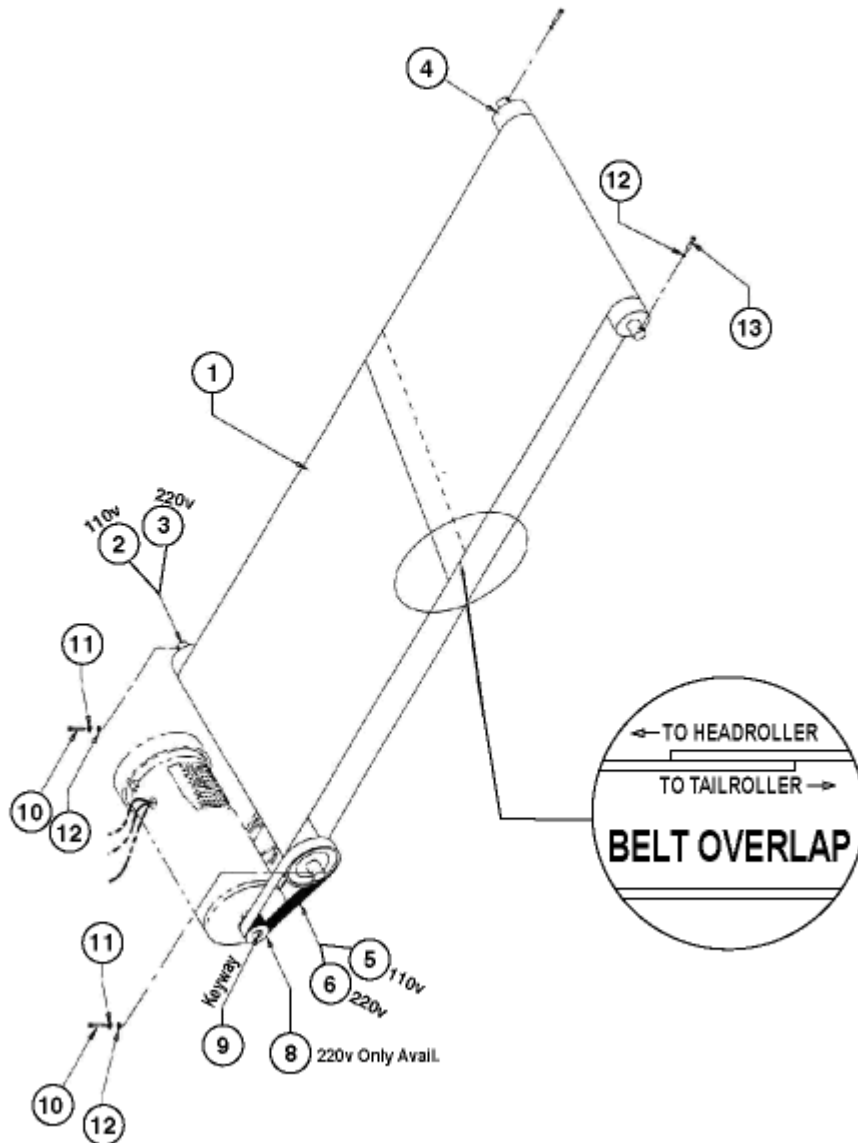
# Display Assy

Callout	Part Number:	Description
1	<b>800-0635</b>	Disp Panel, Alum, Programmable
2	<b>800-0628</b>	Disp Panel, Alum, Jogger
3	<b>800-0621</b>	Disp Panel, Alum, Walker
4	<b>800-0623</b>	*OBSOLETE*
5	<b>800-0622</b>	*OBSOLETE*
6	<b>800-3035</b>	Disp Panel, Plas, Programmable
7	<b>800-3045</b>	*OBSOLETE*
8	<b>800-3040</b>	*OBSOLETE*
9	<b>800-0623</b>	*OBSOLETE*
10	<b>800-0623</b>	*OBSOLETE*
11	<b>800-1096</b>	Tray, Plas for Alum face
12	<b>800-3060</b>	Back Plate Metal, Plas face
13	<b>800-0205</b>	*OBSOLETE*
14	<b>800-0865</b>	Eprom 2764A, Order Version:
15	<b>120-0111</b>	Standoff, 6-32x1/2" M-f





## ST2000 & 3000 Series Drive & Belt Assy



Page 5

Product ID: 22 • Diagram ID: 66

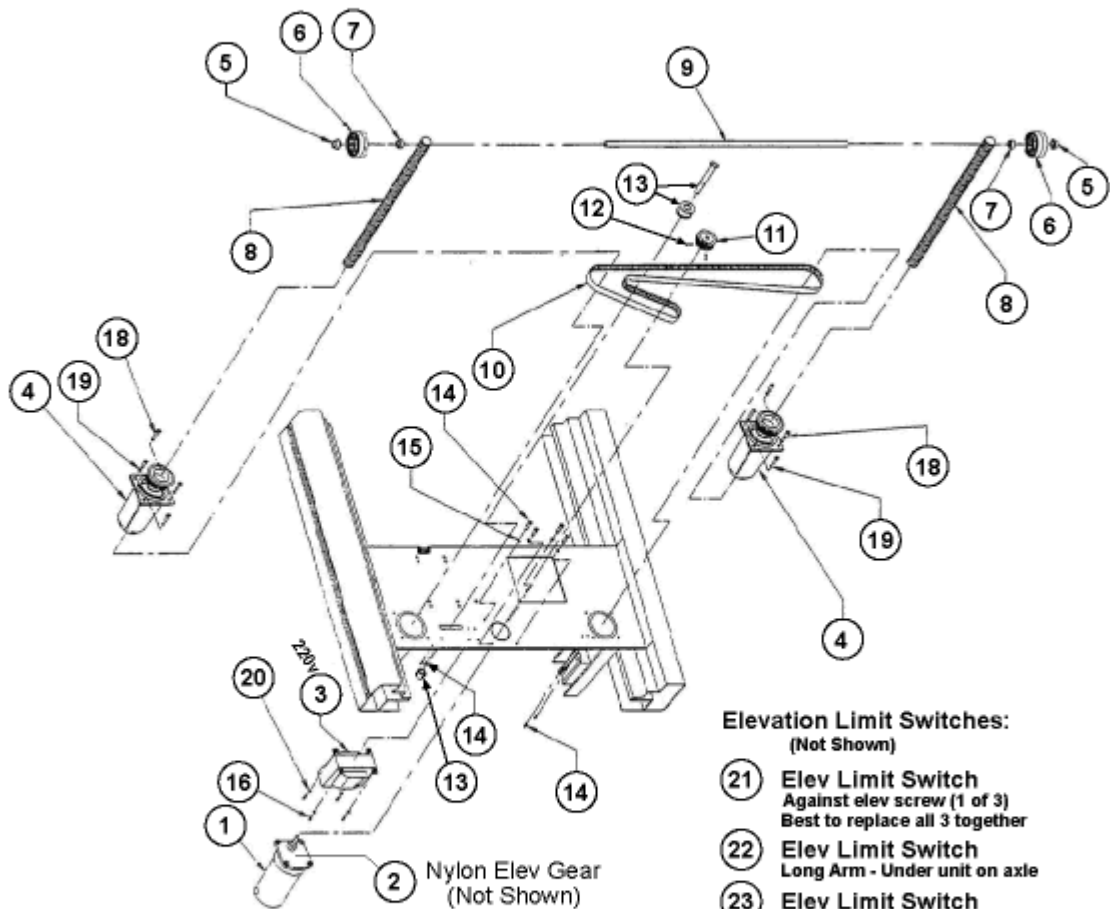
# Drive & Belt Assy

Callout	Part Number:	Description
1	<b>130-1630</b>	Belt, Running, 20x128.5"
2	<b>708-0061</b>	Roller, Head
3	<b>708-0059</b>	Roller, Head
4	<b>708-0132</b>	Roller, Tail, 4/45/39/2/3/18+
5	<b>130-0121</b>	Belt, Drive, 280J10, Poly-V
6	<b>130-0120</b>	Belt, Drive, 260J10, Poly-V
8	<b>130-0245</b>	Pulley, Drive, 10J, 7/8" id
9	<b>110-1442</b>	Keyway, 3/16x1.5" Steppers
10	<b>110-3056</b>	Screw, 5/16-18x2.0" Shcs
11	<b>120-0496</b>	Washer, 5/16" Lock
12	<b>120-0490</b>	Washer, 5/16 x1/2" Flat
13	<b>110-0651</b>	Screw, 5/16-18x1.75" Shcs Thr



ST 2000 / ST 3000

# Elevation Assy



## Elevation Limit Switches: (Not Shown)

- 21 Elev Limit Switch  
Against elev screw (1 of 3)  
Best to replace all 3 together
- 22 Elev Limit Switch  
Long Arm - Under unit on axle
- 23 Elev Limit Switch  
2000 Upper Limit
- 24 0% Percent Cable  
Connects to CO-7
- 25 Lower/Upper Limit Cable  
Connects to CO-4
- 26 Elev RPM Sensor (Not Shown)  
Connects to CO-5
- 27 Elev Sensor Disc (Not Shown)
- 28 Elev Motor Brushes (Not Shown)

Page 3

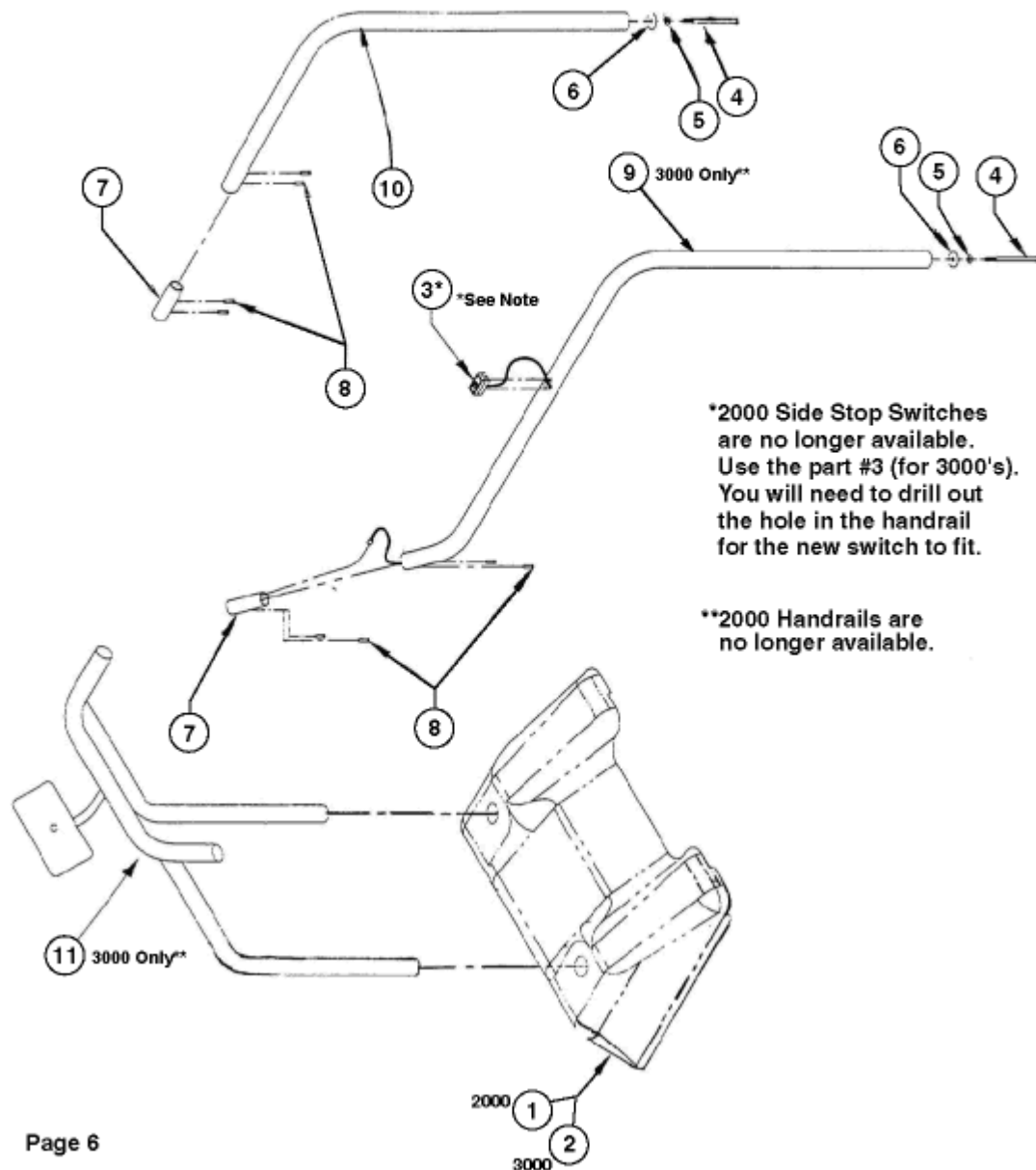
Product ID: 22 • Diagram ID: 64

# Elevation Assy

Callout	Part Number:	Description
1	<b>800-0105</b>	Motor, Elev, 2000/3000
2	<b>800-3277</b>	Elev Motor Gear, nylon
3	<b>800-3261</b>	Xfmr, 220v only, Auto
4	<b>708-0151</b>	Elev Can
5	<b>110-1415</b>	Axle Push Cap, 1/2"
6	<b>130-1280</b>	Wheel, 3x1x1/2" bore
7	<b>020-6268</b>	Spacer, Elevation
8	<b>800-0460</b>	Elev Screw, Flat Spot
9	<b>715-3430</b>	Elev Axle, 1/2" dia
10	<b>130-0050</b>	Belt, Elev, 1595-5M15
11	<b>130-0250</b>	Pulley, Elev Mtr, 2/3/15/1000
12	<b>110-0471</b>	*OBSOLETE*
13	<b>800-0225</b>	Elev, Idler Pulley Assy
14	<b>110-0390</b>	Screw, 10-32x1/2" Bhss
15	<b>120-0350</b>	Washer, #10 Split/lock
16	<b>020-6268</b>	Spacer, Elevation
18	<b>110-3119</b>	Screw, 1/4-20x3/4" Bhcs,loctite
19	<b>120-0420</b>	Washer, 1/4" Lock
20	<b>120-0220</b>	Washer, #10 Ext Tooth
21	<b>800-0860</b>	Switch, Elev Limit, 3 Stack
22	<b>470-0260</b>	Switch, Micro Spdt Long Arm
23	<b>800-0255</b>	Brkt, Upper Limit Assy
24	<b>800-0090</b>	Switch, 0% w/Cable
25	<b>800-0085</b>	Switch, LL, w/Cable
26	<b>800-0075</b>	Sensor, Elev
27	<b>020-0540</b>	Rpm Disk, Elev
28	<b>800-0993</b>	Brush Set, Elev Mtr, 2000/3000

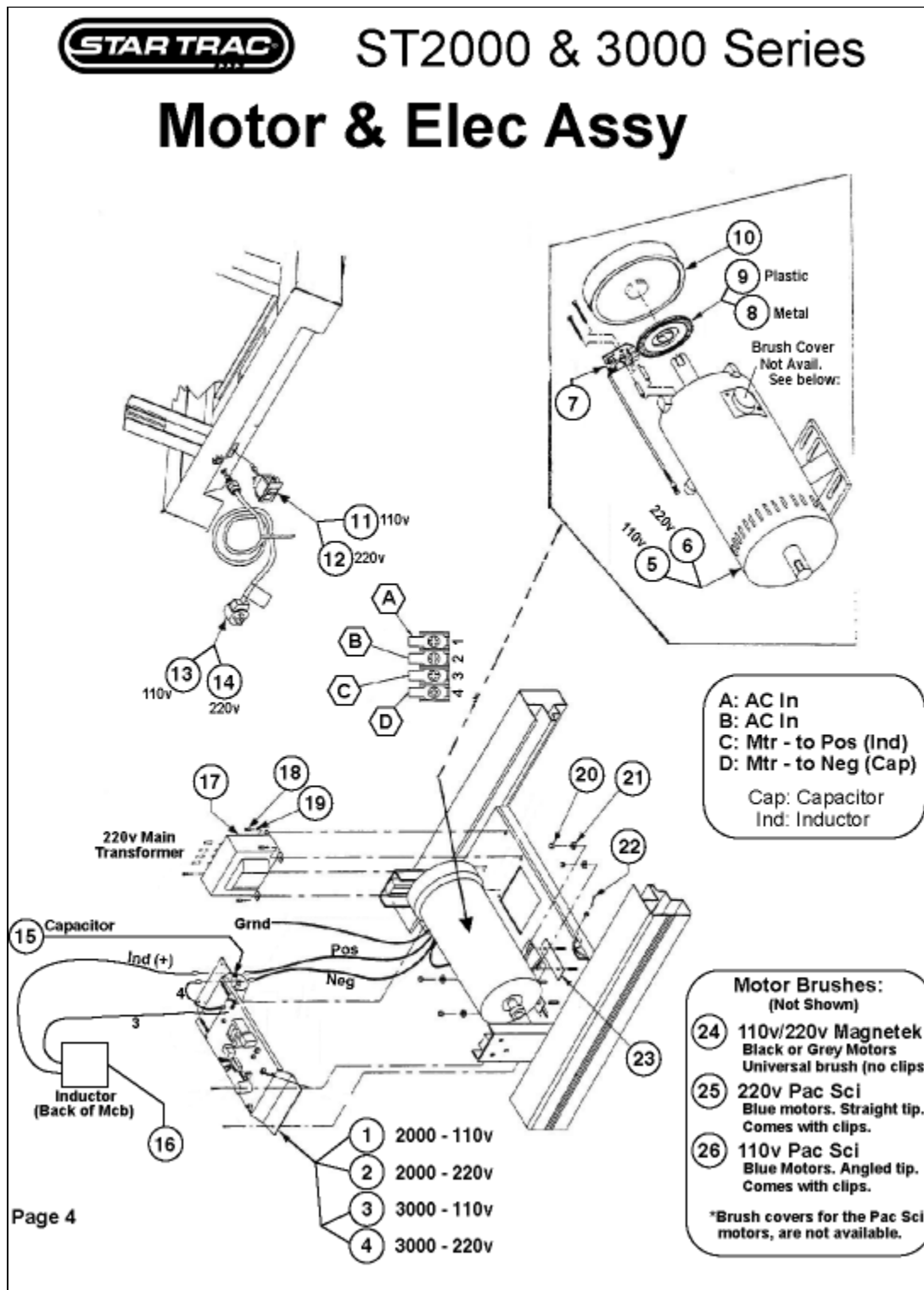


# ST2000 & 3000 Series Handrail Assy



# Handrail Assy

Callout	Part Number:	Description
1	<b>020-1441</b>	Shroud, Motor, 2000
2	<b>020-0896</b>	Shroud, Motor, 3000/4000
3	<b>800-0124</b>	Switch, Stop w/Cable, 2/3/4000
4	<b>110-0685</b>	Bolt, 5/16-18x6.0" Hex
5	<b>120-0480</b>	Washer, 5/16" Cut
7	<b>710-0521</b>	Insert, Hrail
8	<b>110-0506</b>	Screw, 1/4-28x3/8" Bhss
9	<b>708-3061</b>	*OBSOLETE*
10	<b>708-3064</b>	*OBSOLETE*
11	<b>708-3072</b>	Hrail, Front, w/o St



Product ID: 22 • Diagram ID: 65

# Motor & Electrical Assy

Callout	Part Number:	Description
1	800-0350	*Not Currently Available*
2	800-0030	*Not Currently Available*
3	800-0038	*Not Currently Available*
4	800-0037	*Not Currently Available*
5	260-0115	Motor, Drive, 110v 1.5hp pac
6	800-0025	Motor, Drive, 220v 2.0hp spa
7	800-0070	Rpm Sensor, Optical
8	800-0405	Rpm Disk, 125 Window, Metal
9	020-0441	Rpm Disk, 125 Window, Plastic
10	020-0681	Flywheel, 8" x 5/8" id
11	470-0190	Switch, Pwr, On/off Brkr, 110v 18a
12	470-0180	Switch, Pwr, On/off Brkr, 220v 18a
13	800-0445	Power Cord, 110v, nema 5-20
14	800-0275	Power Cord, 220v, nema 6-15
15	430-0360	Capacitor, All 2200Uf 350v
16	800-1030	Choke, 15 Amp, Mcb Mnt
17	800-0249	Xfmr, 220v-110v, Step Down
18	110-0390	Screw, 10-32x1/2" Bhss
19	120-0220	Washer, #10 Ext Tooth
20	110-1870	Nut, 5/16-18
21	120-0480	Washer, 5/16" Cut
22	110-1510	Bolt, 5/16-18x1.75"
23	140-0020	Pad, Motor, 1/16"
24	800-0992	Brush Set, 110-220v, blk/gry
25	800-0995	Brush Set, 220v, blu PacSci
26	800-0997	Brush Set, 110v, blu PacSci